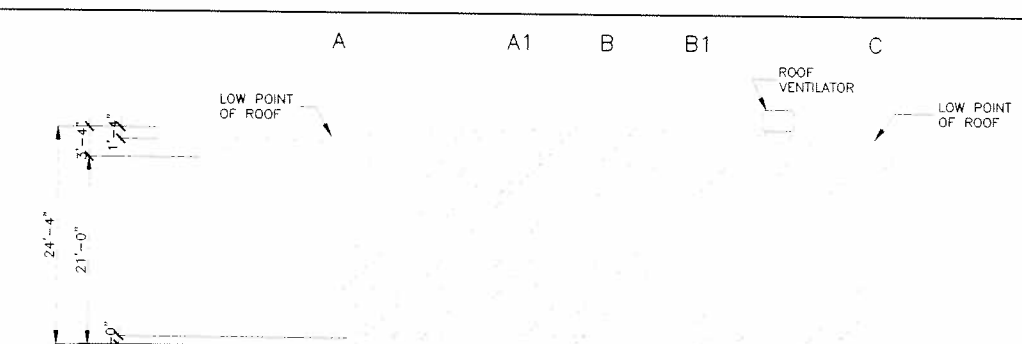
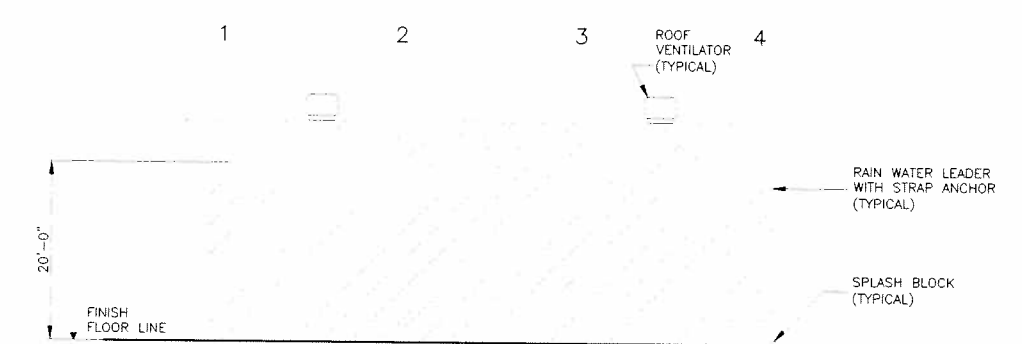


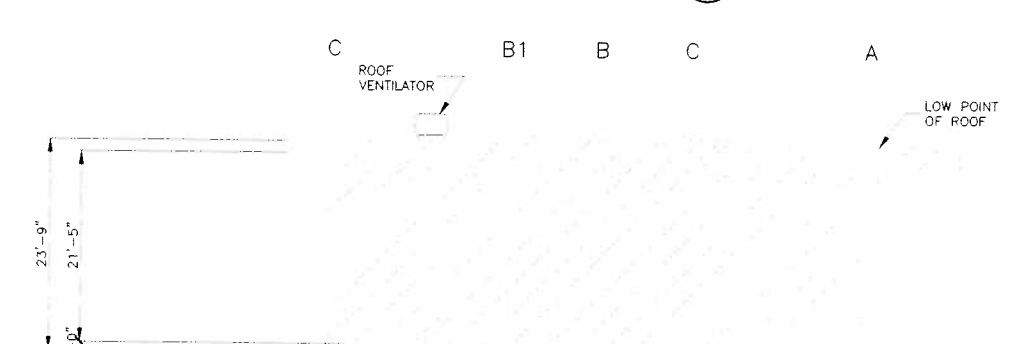
NORTH ELEVATION 1
SCALE: 1/8"=1'-0" A10-24



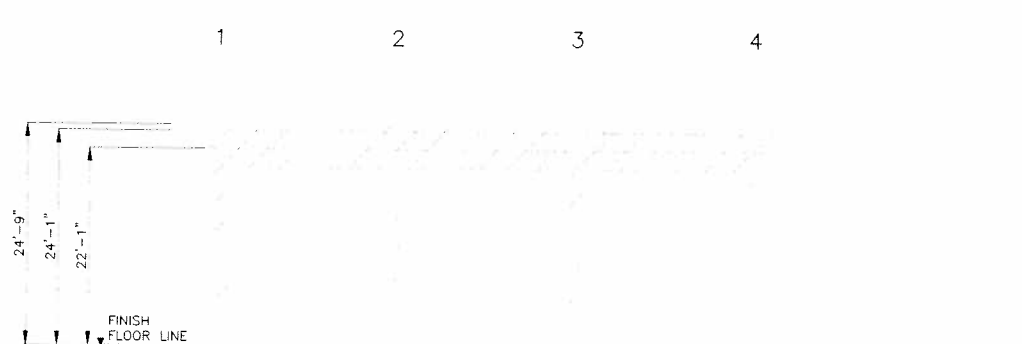
EAST ELEVATION 4
SCALE: 1/8"=1'-0" A10-24



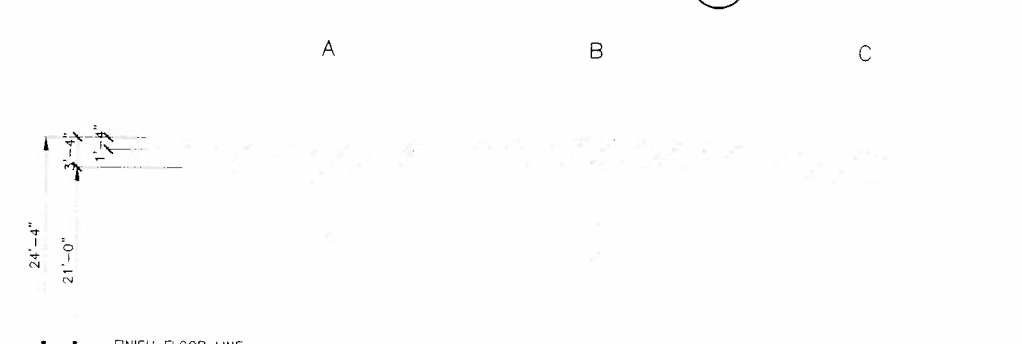
SOUTH ELEVATION 2
SCALE: 1/8"=1'-0" A10-24



WEST ELEVATION 5
SCALE: 1/8"=1'-0" A10-24

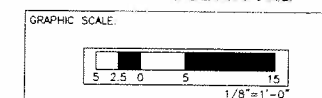


LONGITUDINAL SECTION 3
SCALE: 1/8"=1'-0" A10-24



TRANSVERSE SECTION 6
SCALE: 1/8"=1'-0" A10-24

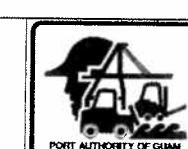
PRELIMINARY SUBMITTAL



A:\2010\A10-24\A10-24.dwg (10/24/2010 10:24:46 AM) User: f.z.diamzon

DRAWING REVISIONS			
REVISION	DATE	BY	DESCRIPTION

DESIGNER F. Z. DIAMZON
DETAILER L. V. RAMOS
CHECKER F. Z. DIAMZON
DATE JULY 2010



JOSE D. LEON GUERRERO COMMERCIAL PORT
PORT AUTHORITY OF GUAM
MODERNIZATION AND EXPANSION PROGRAM
 WELDING SHOP
 NORTH ELEV., SOUTH ELEV., LONGITUDINAL ELEV.,
 EAST ELEV., WEST ELEV. & TRANSVERSE SECTION

DRAWING NO. A10-24
SHEET NO. 270
TOTAL SHEETS 375